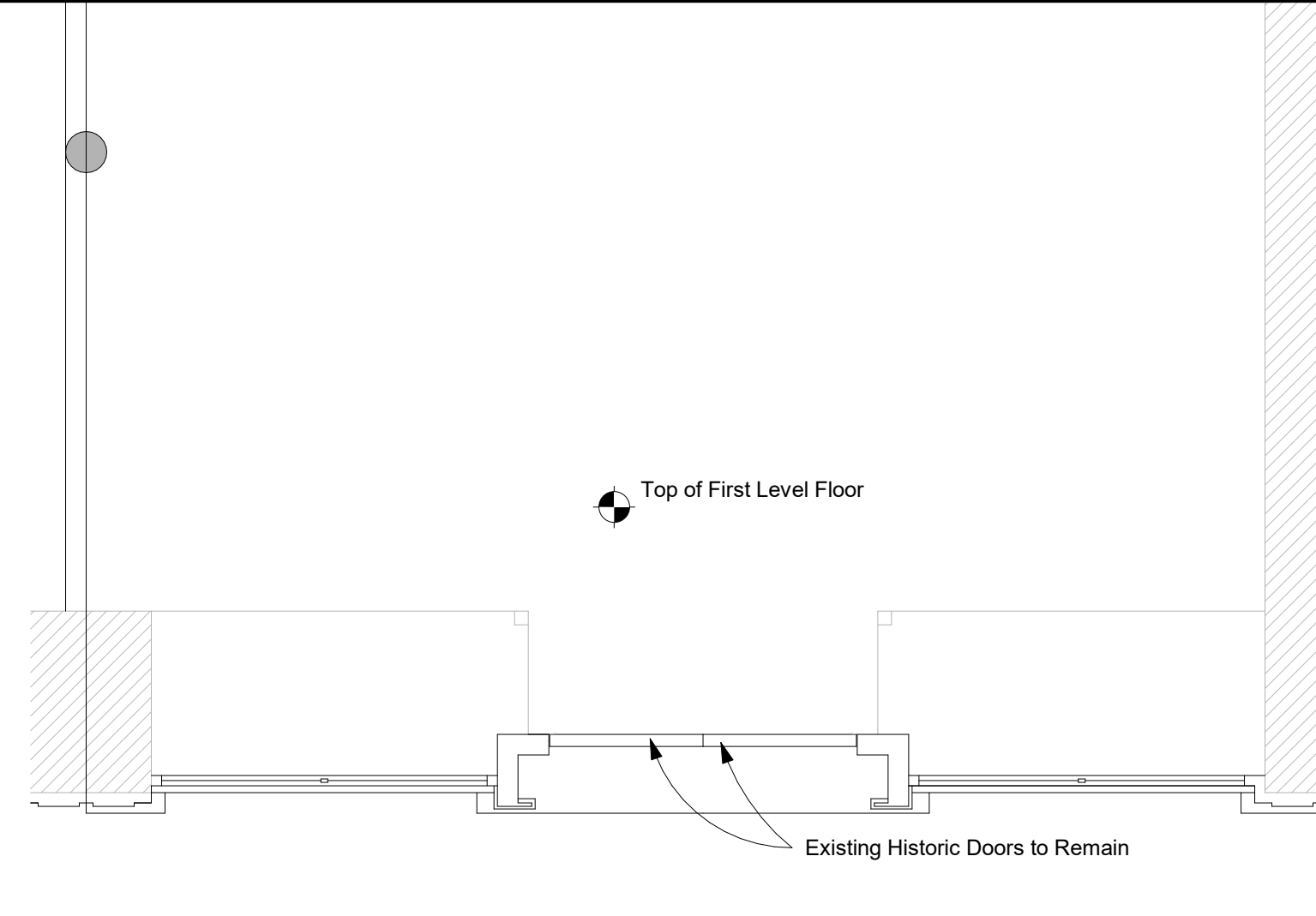
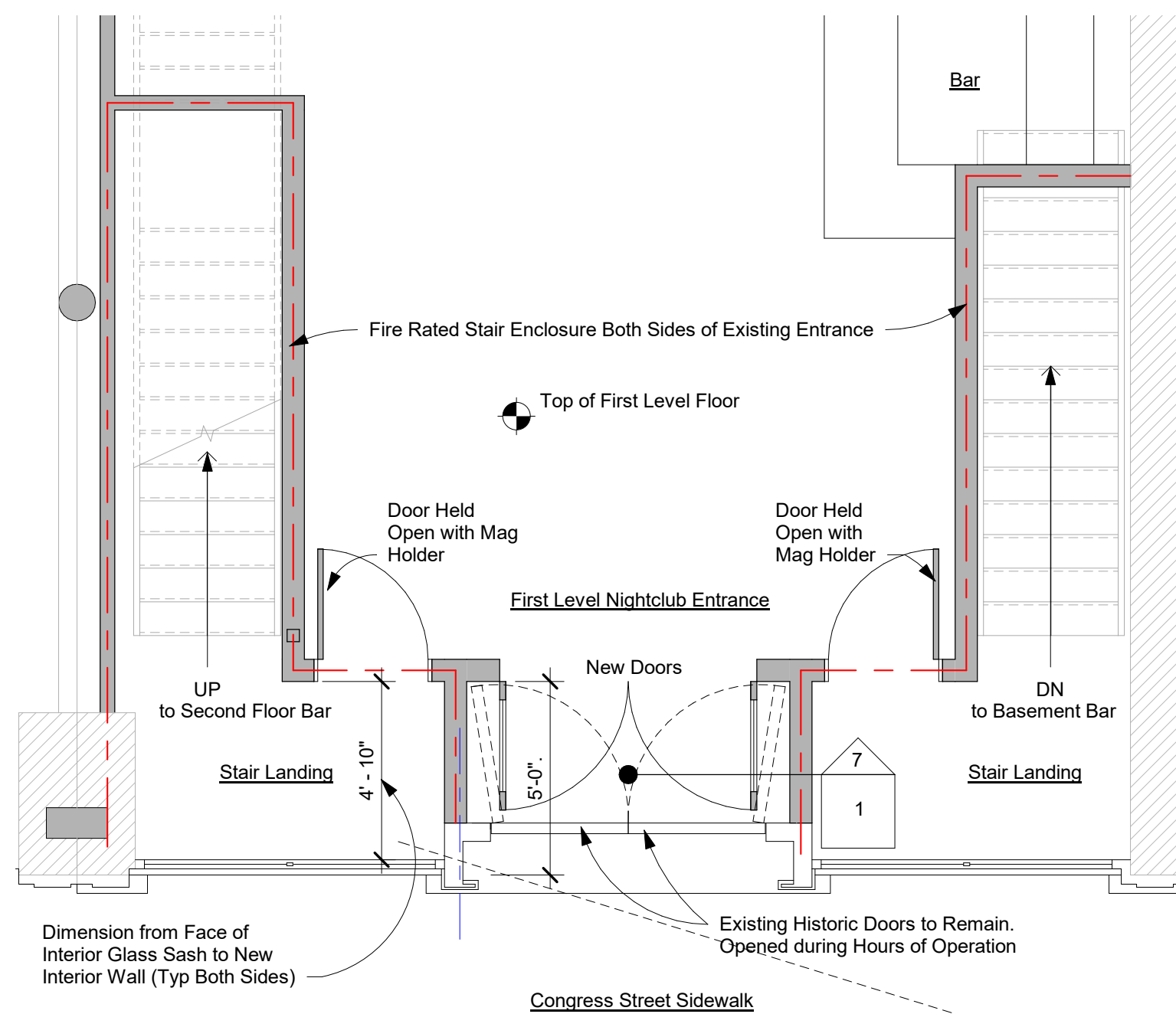


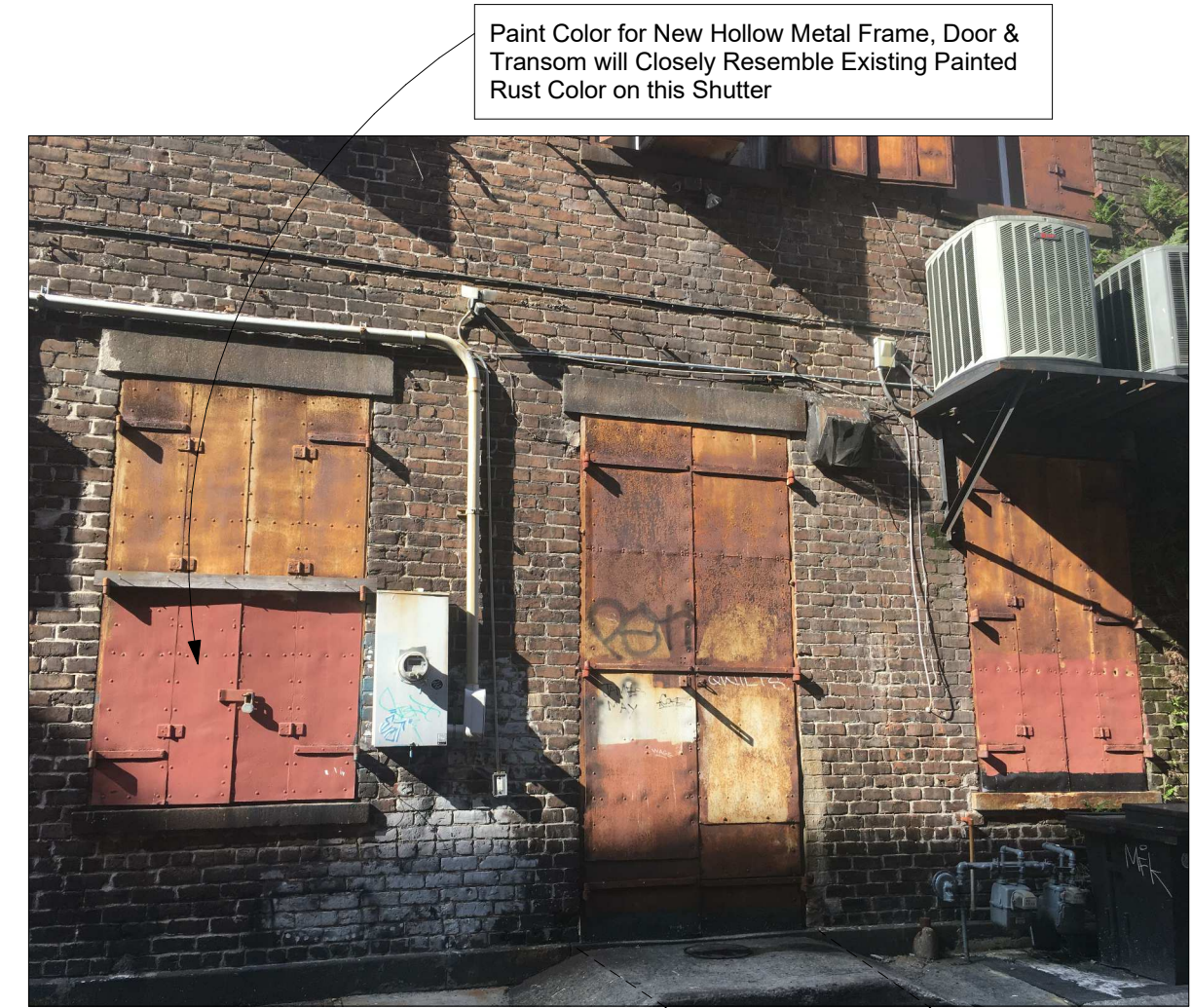
THIS DRAWING IS THE PROPERTY OF BARNARD ARCHITECTS AND IS NOT TO BE REPRODUCED OR COPIED IN WHOLE OR IN PART WITHOUT THE PERMISSION OF SAME. IT IS NOT TO BE USED ON ANY OTHER PROJECTS AND IS TO BE RETURNED ON REQUEST. SCALES STATED HEREON ARE VALID ON THE ORIGINAL DRAWING ONLY AND MAY BE CHANGED IN PROPORTION TO THE DIFFERENCE IN SIZE BETWEEN THE PRINT AND THE ORIGINAL. DO NOT SCALE DIMENSIONS FROM PRINTS. PLANS AND DETAILS ARE NOT ALWAYS DRAWN TO SCALE. USE DIMENSIONS GIVEN OR CONSULT WITH ARCHITECT FOR CLARIFICATION.



1 Partial Existing Plan - @Congress Street
1/4" = 1'-0"



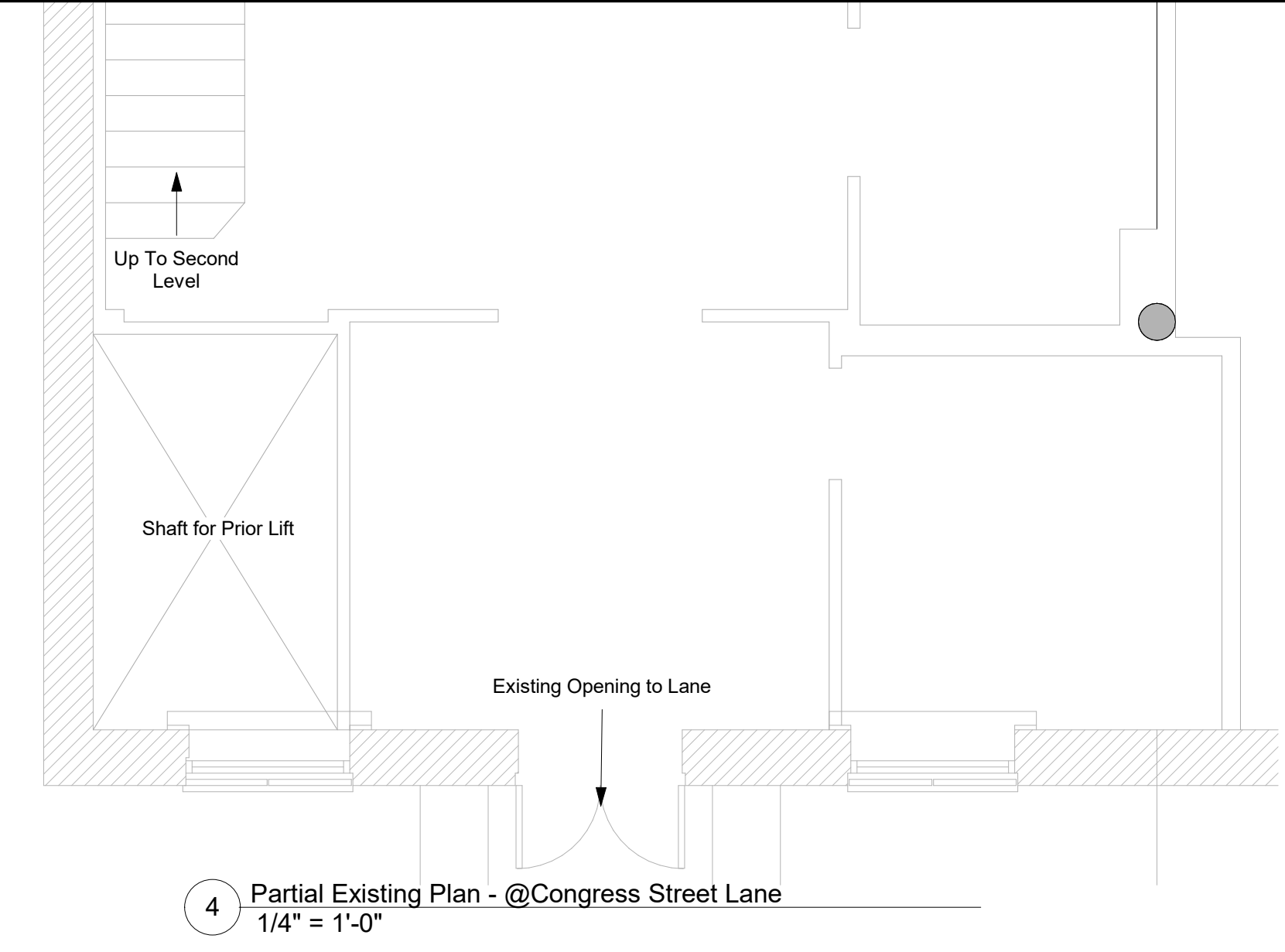
2 Partial Schematic Plan - @Congress Street
1/4" = 1'-0"



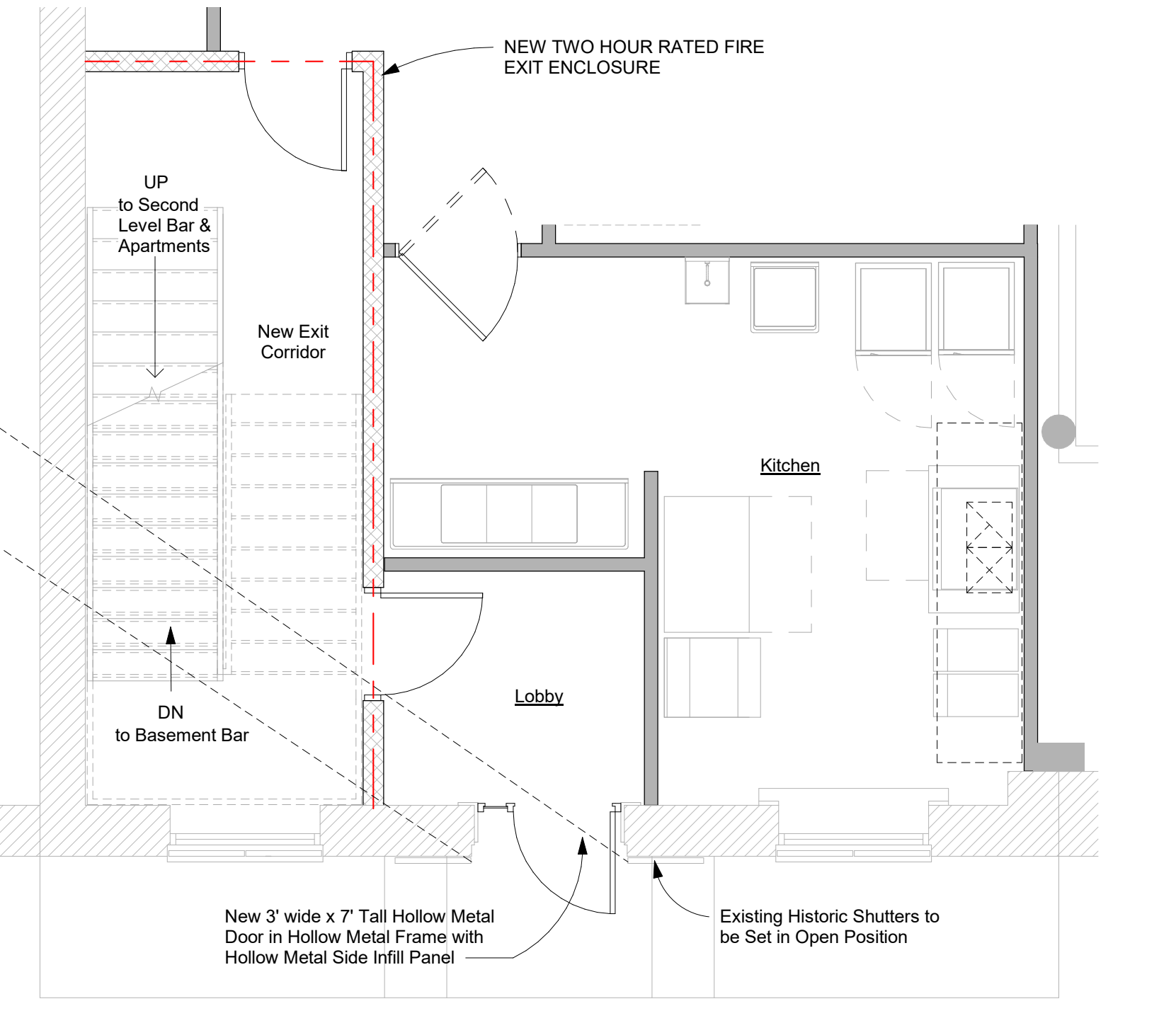
Congress Street Lane



Congress Street Entrance

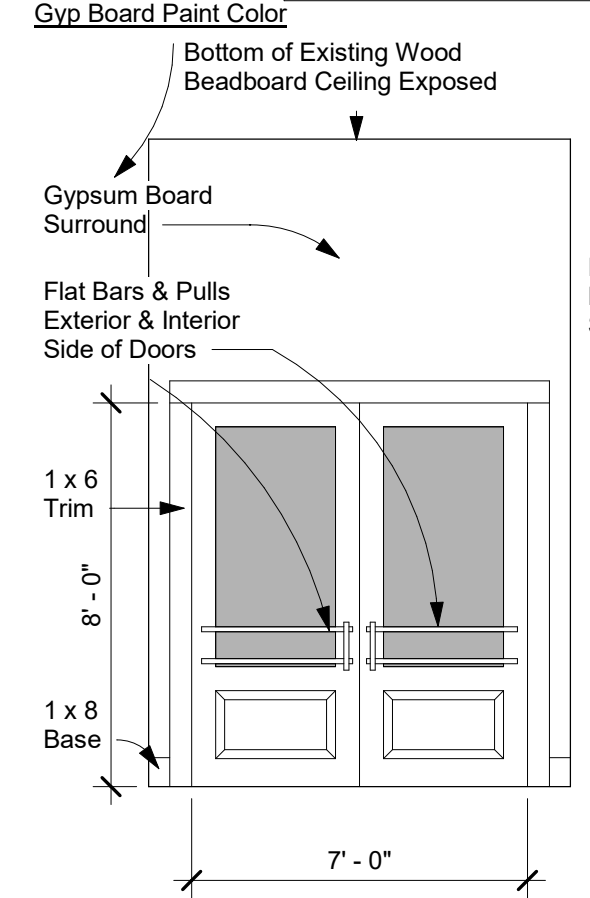


4 Partial Existing Plan - @Congress Street Lane
1/4" = 1'-0"

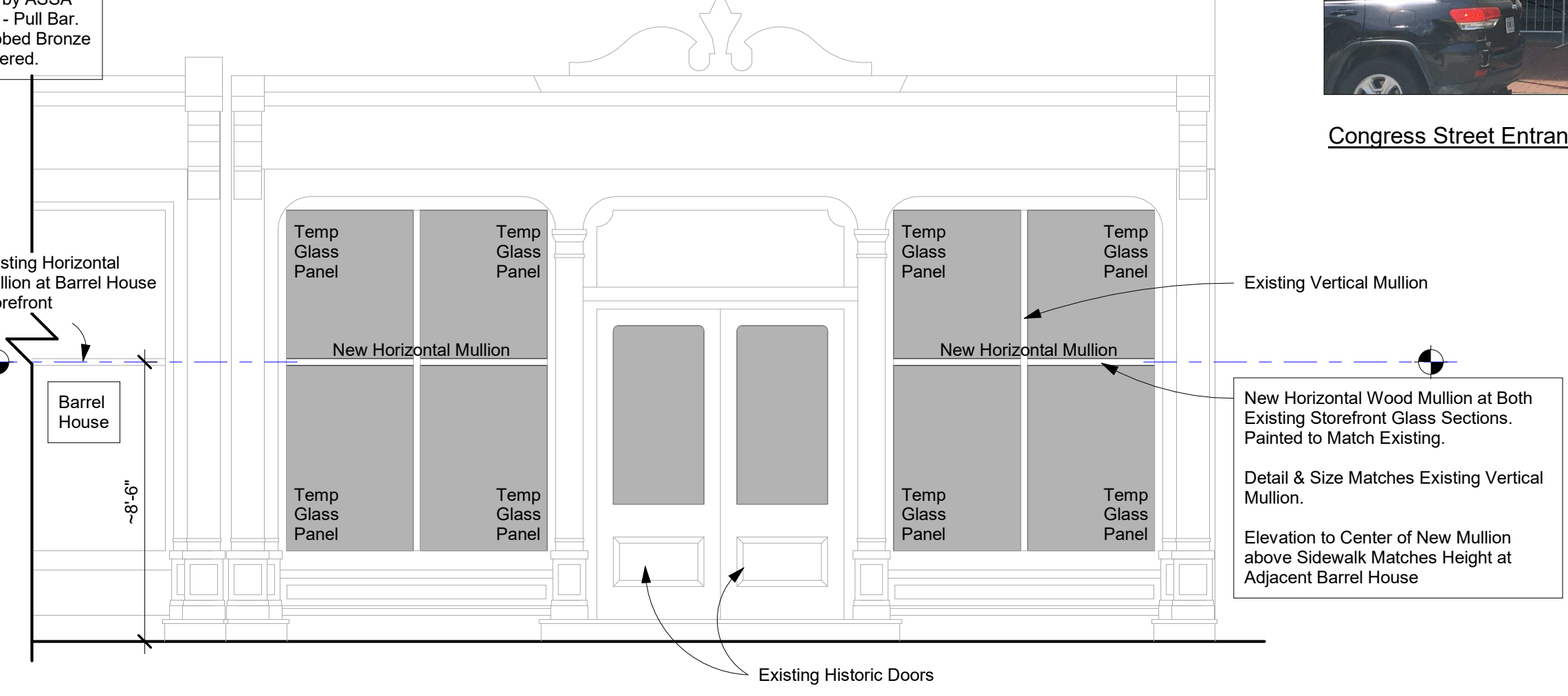


5 Partial Schematic Plan - @Congress Street Lane
1/4" = 1'-0"

- New Door Specifications:**
- Doors will be Custom Made. Wood Species is Sapele (African Heartwood) with Natural Finish. Quartersawn Grain Pattern.
 - Trim (Including Base) will be Paint Grade. Color Matching Existing Dark Green at Exterior.
 - Door Push/Pull Bars are by ASSA Abloy, Rockwood 20-PB - Pull Bar. Finish is US10B, Oil Rubbed Bronze.
 - Glass will be clear, tempered.

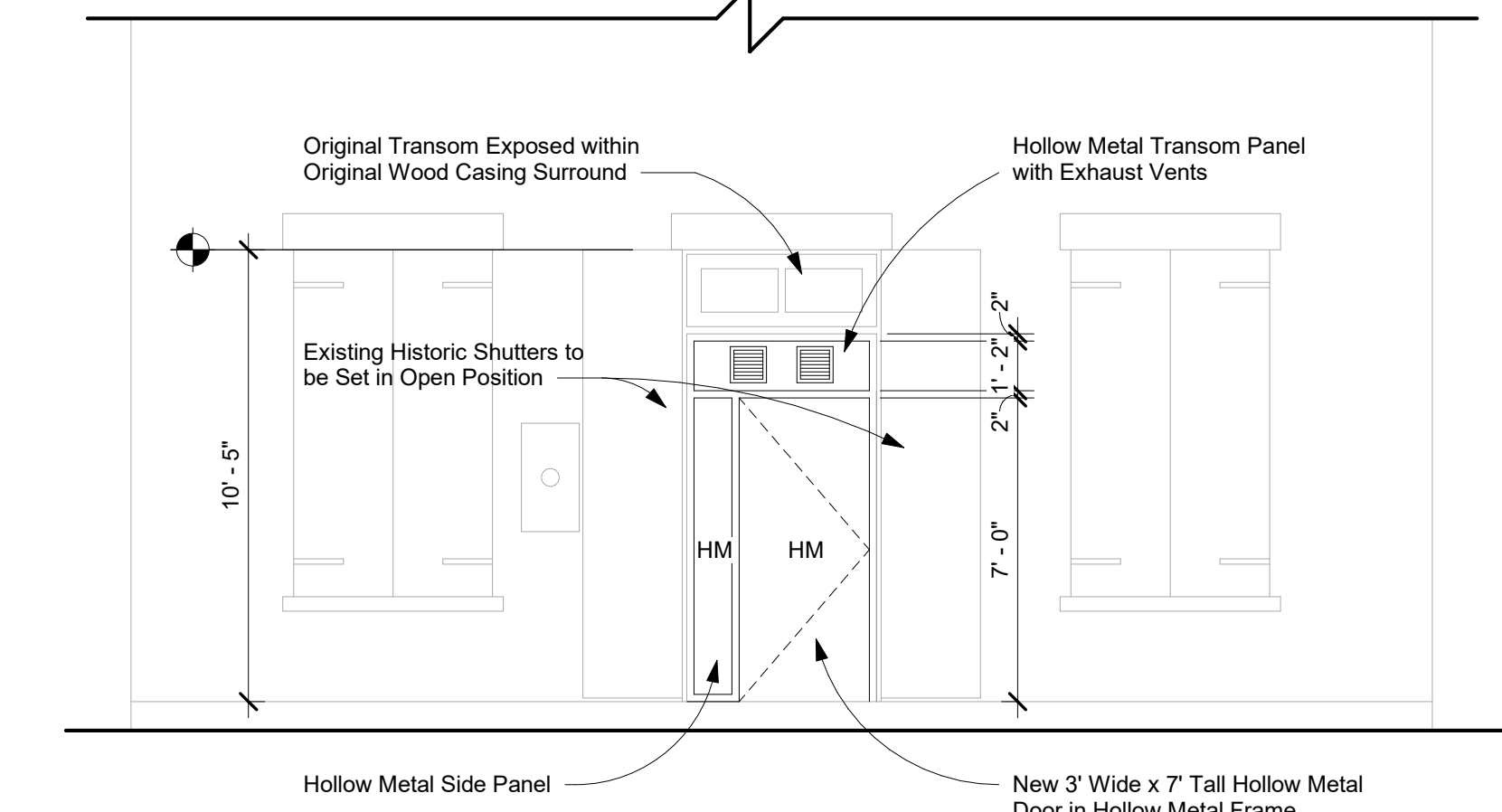


7 Interior Entrance Doors
1/4" = 1'-0"



3 Partial Congress Street Elevation
1/4" = 1'-0"

- Scope of Work as Indicated on this Sheet:**
- Congress Street Elevation:**
- Remove Two Storefront Sashes. Remove Glass. Add Horizontal Mullions. Install Four New Sections of Clear Tempered Glass. Paint New Mullion Matching Existing Paint Color.
 - At New Interior Wall Set Approximately 5'-0" from Face of Exterior Facade, New Wood Double Doors are Indicated. Measuring 7' Wide x 8' Tall with 3/4" Glass Lite and Panel Below. They are Indicated as Non-Lockable Passage Doors with Flat Bar Push/Pull Bars. Wall in Vestibule to Extend to Existing Beaded Wood Ceiling and Painted. Base will be 1 x 8. All Trim Painted to Match Exterior Dark Green Color.
- Congress Lane Elevation:**
- Open Existing Historic Shutters at Door Opening Exposing Original Transom Sash, Wood Paneled Surround and Non-Historic Dropped Panel. (Refer to Pictures)
 - Remove Non-Historic Panel
 - Install Hollow Metal Door, Side Panel and Transom within 2" Wide Hollow Metal Frame. Refer to Elevation for Extent. Install Bathroom Exhaust Louvers within Transom Panel.



6 Partial Congress Lane Elevation
1/4" = 1'-0"

BARNARD ARCHITECTS
ARCHITECTURE, PLANNING, LANDSCAPE, INTERIORS, HISTORIC
220 EAST HALL STREET, SAVANNAH, GA 31401 (912) 232-6173 www.BarnardArchitects.com
ASSOCIATES: ROBERT J. PORTMAN & JOHN A. CLEGG

ARCHITECT & ENGINEER SEAL

Renovations at 127 W Congress
(Formerly Jinx & Velvet Elvis)
127 W Congress Street
Savannah, Ga

Project Status:
HDBR Submittal

Date:
9.17.2020

Revision Date / Description:

Revision Date / Description:

SHEET NO.:
1