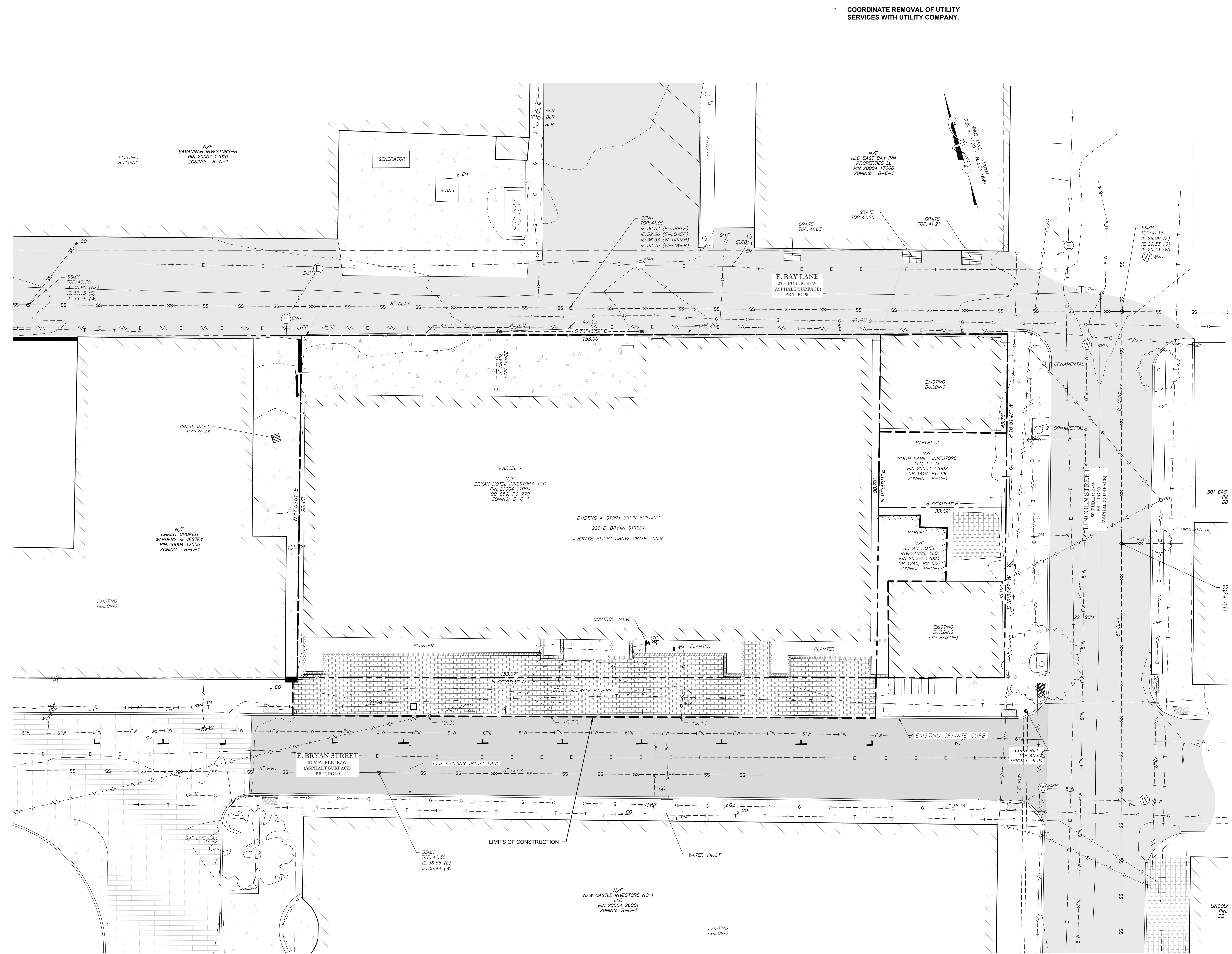
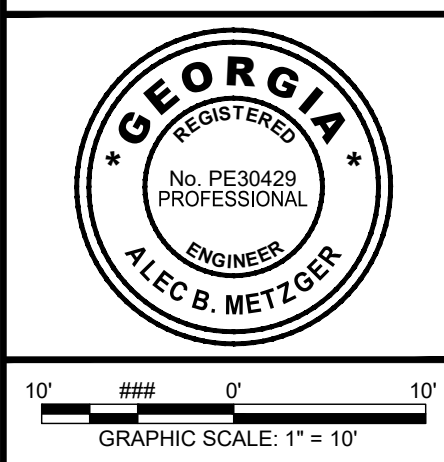


C:\2022\12-0036 TEMPO HOTEL SAVANNAH\DWG\12-0036C\_B01.DWG 5/11/2022 10:23 AM



COORDINATE REMOVAL OF UTILITY SERVICES WITH UTILITY COMPANY.

NO.	REVISION DESCRIPTION	DATE



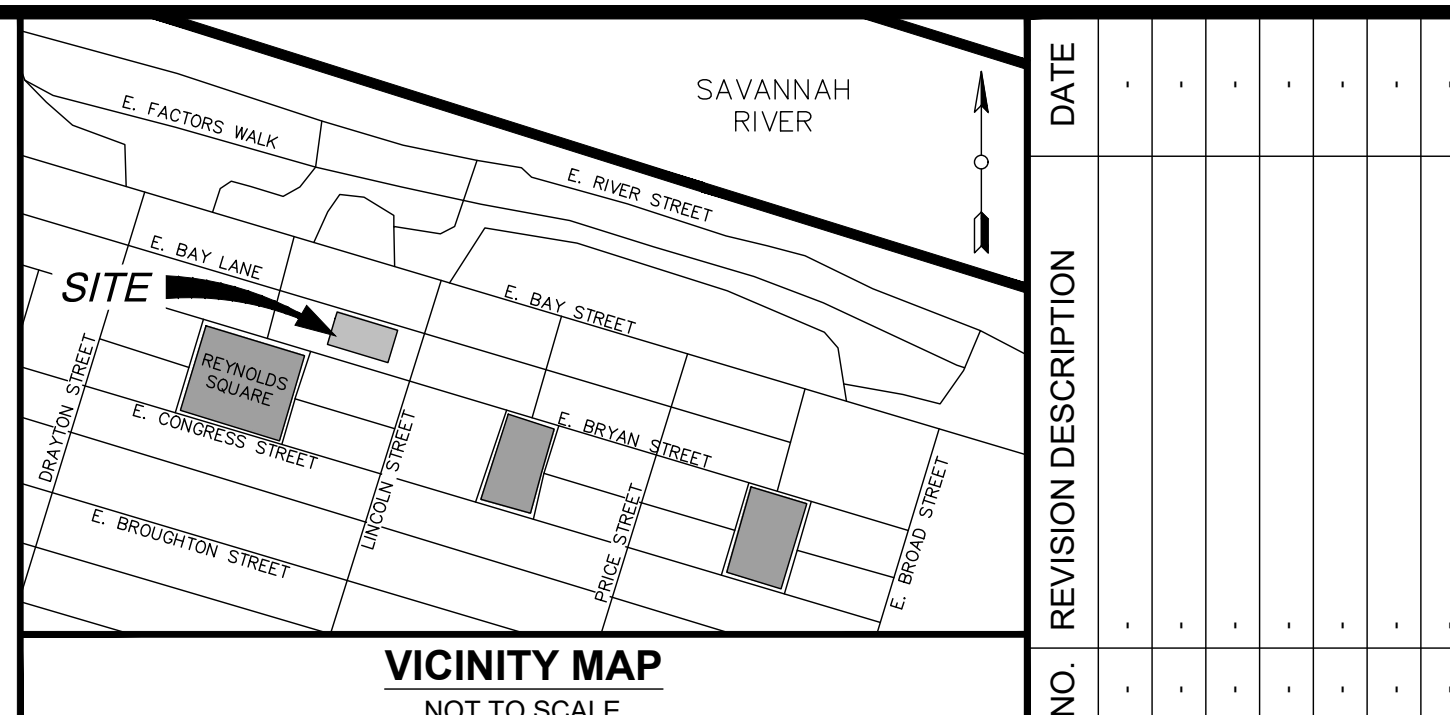
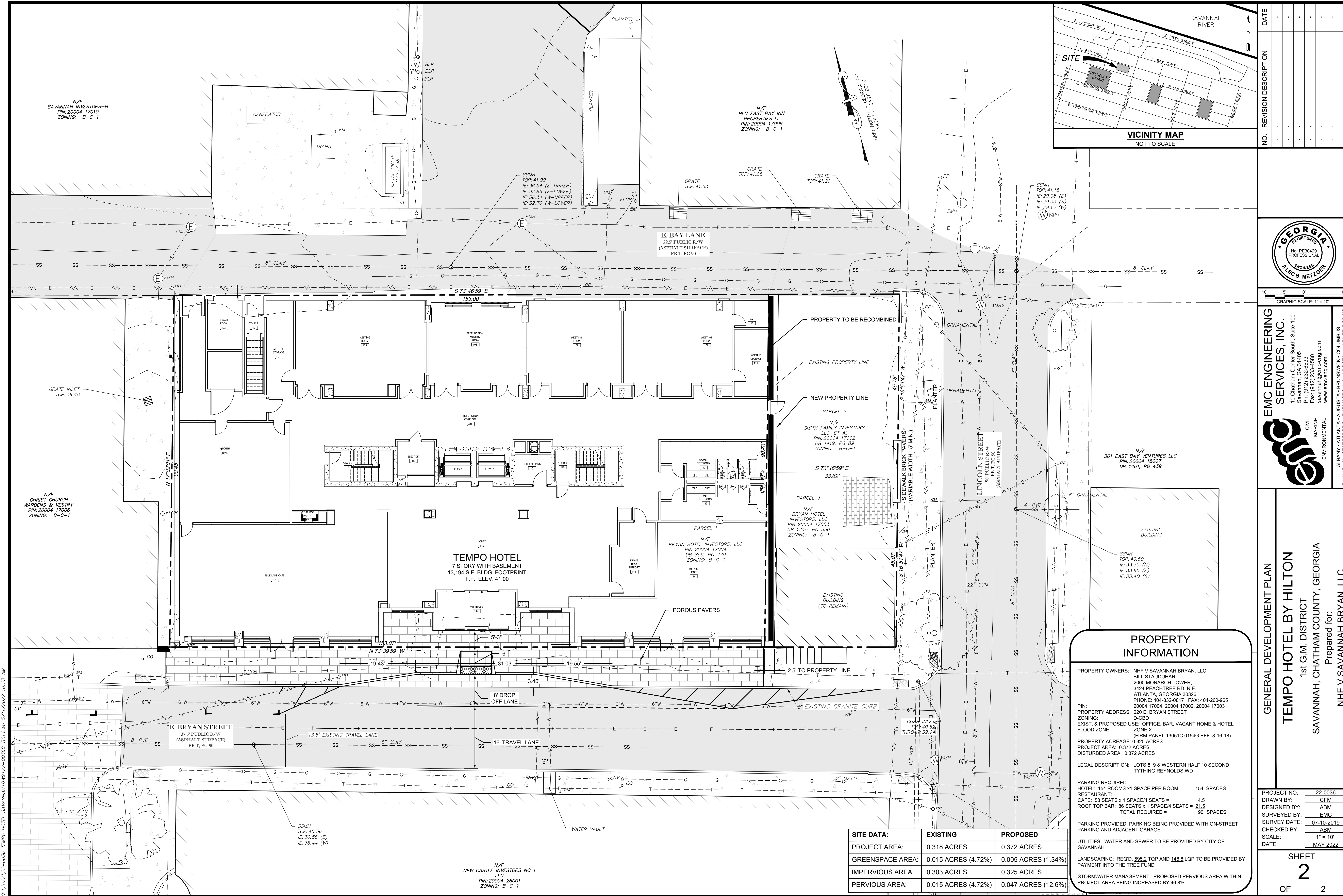
**EMC ENGINEERING SERVICES, INC.**  
 220 E. BRYAN STREET, SUITE A  
 SAVANNAH, GA 31401  
 PH: (912) 232-8333  
 FAX: (912) 232-8336  
 WWW.EMC-ENG.COM

CIVIL  
 MARINE  
 ENVIRONMENTAL

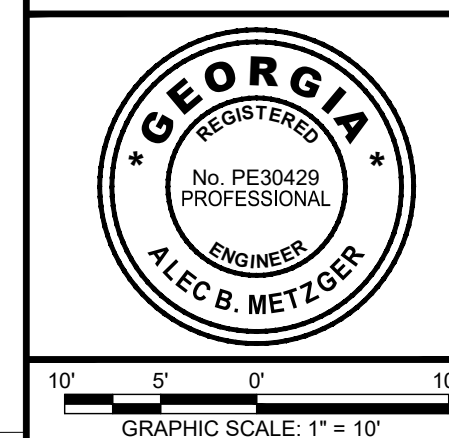
ALBANY • ATLANTA • AUGUSTA • BRUNSWICK • COLUMBUS • GREENVILLE  
 SAVANNAH • STATESBORO • THOMASVILLE • VALDOSTA

EXISTING CONDITIONS & DEMOLITION PLAN  
**TEMPO HOTEL BY HILTON**  
 220 E. BRYAN STREET  
 SAVANNAH, GEORGIA  
 Prepared for:  
**NOBLE INVESTMENT GROUP**

PROJECT NO.:	22-0036
DRAWN BY:	CFM
DESIGNED BY:	ABM
SURVEYED BY:	EMC
SURVEY DATE:	07-10-2019
CHECKED BY:	ABM
SCALE:	1" = 10'
DATE:	MAY 2022



NO.	REVISION DESCRIPTION	DATE



**EMC ENGINEERING SERVICES, INC.**  
 10 Chatham Center South, Suite 100  
 Savannah, GA 31405  
 Pin: (912) 232-5530  
 savannah@emc-eng.com  
 www.emc-eng.com

CIVIL MARINE ENVIRONMENTAL

ALBANY • ATLANTA • AUGUSTA • BRUNSWICK • COLUMBUS  
 SAVANNAH • STATESBORO • THOMASTON • VALDOSTA • WARNER ROBINS

**GENERAL DEVELOPMENT PLAN**

**TEMPO HOTEL BY HILTON**  
 1st G.M. DISTRICT  
 SAVANNAH, CHATHAM COUNTY, GEORGIA

Prepared for:  
**NHF V SAVANNAH BRYAN, LLC**

**PROPERTY INFORMATION**

PROPERTY OWNERS: NHF V SAVANNAH BRYAN, LLC  
 BILL STAUDHAR  
 2000 MONARCH TOWER  
 3424 PEACHTREE RD. N.E.  
 ATLANTA, GEORGIA 30326  
 PHONE: 404-832-0817 FAX: 404-260-965  
 20004 17004, 20004 17002, 20004 17003

PIN: D-CSD  
 PROPERTY ADDRESS: 220 E. BRYAN STREET  
 EXIST. & PROPOSED USE: OFFICE, BAR, VACANT HOME & HOTEL  
 FLOOD ZONE: ZONE X  
 (FIRM PANEL 13051C 0154G EFF. 8-16-18)

PROPERTY ACREAGE: 0.320 ACRES  
 PROJECT AREA: 0.372 ACRES  
 DISTURBED AREA: 0.372 ACRES

LEGAL DESCRIPTION: LOTS 8, 9 & WESTERN HALF 10 SECOND TYTHING REYNOLDS WD

PARKING REQUIRED:  
 HOTEL: 154 ROOMS x 1 SPACE PER ROOM = 154 SPACES  
 RESTAURANT:  
 CAFE: 58 SEATS x 1 SPACE/4 SEATS = 14.5  
 ROOF TOP BAR: 86 SEATS x 1 SPACE/4 SEATS = 21.5  
 TOTAL REQUIRED = 190 SPACES

PARKING PROVIDED: PARKING BEING PROVIDED WITH ON-STREET PARKING AND ADJACENT GARAGE

UTILITIES: WATER AND SEWER TO BE PROVIDED BY CITY OF SAVANNAH

LANDSCAPING: REQ'D 99S.2 TOP AND 148.8 LOP TO BE PROVIDED BY PAYMENT INTO THE TREE FUND

STORMWATER MANAGEMENT: PROPOSED PERVIOUS AREA WITHIN PROJECT AREA BEING INCREASED BY 46.8%

SITE DATA:	EXISTING	PROPOSED
PROJECT AREA:	0.318 ACRES	0.372 ACRES
GREENSPACE AREA:	0.015 ACRES (4.72%)	0.005 ACRES (1.34%)
IMPERVIOUS AREA:	0.303 ACRES	0.325 ACRES
PERVIOUS AREA:	0.015 ACRES (4.72%)	0.047 ACRES (12.6%)

G:\2022\22-0036 TEMPO HOTEL SAVANNAH\DWG\22-0036C\_B01.DWG 5/11/2022 10:23 AM